



Inspire hope.
Extend our reach.
Strengthen our impact.
Better, together.

Our Mission

Parkinson Society British Columbia (PSBC) is the voice of British Columbians living with Parkinson's. Our purpose is to ease the burden and find a cure for Parkinson's disease through advocacy, education, research and support services.

What is Parkinson's Disease?

Parkinson's disease is caused by a loss of dopamine in the brain and is the second most common neurodegenerative disorder after Alzheimer's disease. Both motor and non-motor symptoms may be experienced, such as tremor, rigidity, slowness of movement, difficulty with speech, sleep disturbance and mood disorders. There is currently no cure.

It is estimated that there are approximately 13,000 individuals living with Parkinson's in British Columbia. Experts predict that the incidence of Parkinson's will double by 2040. While the vast majority of people with Parkinson's are over 60, 20% are diagnosed before the age of 50 and many are in their 30s and 40s.

Staff

Chief Executive Officer	Jean Blake
Programs & Services Manager (Maternity Leave)	Stacey Dawes
Marketing, Communications & Events Manager	Alicia Wrobel
Education & Support Services Coordinator / Co-Manager	Caroline Wiggins
Education & Support Services Coordinator / Co-Manager & Counsellor	Myriame Lépine Lyons
Education & Support Services Coordinator	Jaclyn Willems
Clinical Counsellor (part-time)	Courtney Doherty
Resource Development Officer	Betty Hum
Marketing & Community Engagement Specialist	Amanda McCulley
Resource Development & Volunteer Coordinator	Mirela Dzaferovic
Major Gifts & Individual Giving Development Officer	Rav Kambo
Donor & Member Services Coordinator / Office Manager	Susan Atkinson

Board of Directors

Chair	Andrew Davenport		
Treasurer	Catherine Hsu		
Secretary	Bob Thompson		
Member at Large	Val Swannell		
Past Chair	Colin MacBeath		
Directors	Ariane Grill	Cec Primeau	Michelle Bourbonnais
	Sherri Zelazny	Richard Mayede	Elisabeth Sadowski
	Dave Rickards	James Patterson	
Medical Advisor	Martin J. McKeown, BEng, MD, FRCP(C)		

Executive Message

In 2017, Parkinson Society British Columbia had another progressive year, involving a variety of education events, an expansion of services, newly offered resources and investments in promising research. Our provincial conference, Moving Forward, Together, which took place in June 2017, allowed us to speak with many of you one-on-one. The positive feedback that we received from this event solidified the importance of community. We are better, together. **Your support in 2017 enabled us to inspire hope, extend our reach and increase our impact through:**

- entering into a new research partnership with the Michael Smith Foundation for Health Research (MSFHR). The Foundation is funded by the province of BC and partners with public and private sector organizations to co-fund research, doubling our contributions.
- continuing to fund research through the Parkinson Canada Research Program.
- advocating for public coverage of Duodopa therapy for a limited number of people with advanced Parkinson's disease through BC PharmaCare.
- distributing almost 400 Aware in Care kits to assist people with self-advocacy when hospitalized.
- executing an innovative awareness campaign that built on the stories of real people with Parkinson's disease, with transit ads in four major regions and extensive media coverage throughout BC.
- using technology to service more communities across BC, including providing webinars, video presentations, online support groups and counselling via telephone.
- presenting a provincial conference with expert speakers from across North America.
- implementing a continuing education scholarship program for exercise instructors and healthcare professionals.
- offering a Regional Conference in Kelowna with local leaders in the Parkinson's community.
- delivering Communication and Swallow Workshops in four communities.
- bringing a Time Out for Carepartners event to Burnaby.
- assisting 50 volunteer-led support groups across BC.

We are able to provide all of these services, and more, thanks to your generous support. We are grateful that you put your trust in us to continue our mission.

Signed,

Andrew Davenport, Chair

Jean Blake, CEO

Message from the Treasurer

Catherine Hsu, Treasurer

The Statement of Financial Position for the year ended December 31, 2017, presents healthy working capital with current assets significantly exceeding current liabilities. The Society's investment portfolio with a market value of \$1,126,215 continues to generate modest returns.

Overall, the 2017 Statement of Revenue and Expenses presents an excess of \$569,444, compared to the 2017 budget that was approved with a planned deficit of \$172,910. This excess reflects the receipt of an unanticipated bequest of \$474,000, as well as a \$248,000 disbursement from a 2016 bequest, delayed until January 2017. Fundraising revenue, excluding bequests, increased in 2017 to \$978,416 from \$879,856 in 2016, and continues to be an important part of PSBC's financial well-being. We are grateful for the continued commitment and support of our event participants, volunteers, donors and sponsors.

During 2017, the Board invested in additional education and support services to extend our reach, increase our impact and improve quality of life for people affected by Parkinson's disease in BC. This included hosting a number of Communication & Swallow Workshops across the province, which continue to assist people with Parkinson's manage communication and swallowing challenges in the absence of qualified speech language pathologists.

Notably, we have committed to investing a minimum of \$513,791 in research from 2017 through 2023, including \$86,917 in 2017. While we continue to fund research through the Parkinson Canada Research Program, we recently entered into a partnership with the Michael Smith Foundation for Health Research (MSFHR), which matches our research contributions.

The Society enters 2018 with reserves roughly equal to 12 months of its historical expenses.

Our Picture of Financial Accountability

To view a copy of our audited 2017 Financial Statements, please visit www.parkinson.bc.ca.

REVENUE 2017

47%	Bequests	\$898,836
29%	Special Events	\$569,516
21%	Donations	\$408,900
3%	Investments and Other Income	\$57,589

EXPENSES 2017

40%	Support Services	\$552,140
35%	Fundraising	\$476,623
14%	Public Awareness, Communication & Advocacy	\$187,273
6%	Research	\$86,917
5%	Governance & Administration	\$62,444

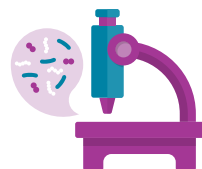
Inspire Hope

How are we growing our investment in research and supporting advocacy?



ADVOCACY

- On February 14, 2017, thanks to a dedicated team of advocates led by Parkinson Society British Columbia, Duodopa, a treatment for advanced Parkinson's disease, was approved for public funding through BC PharmaCare.
- PSBC assisted the Ministry of Health and the Vancouver Coastal Health Authority in recruiting patients to inform a Health Technology Review. This was designed to provide evidence-informed recommendations comparing Duodopa therapy, Deep Brain Stimulation and oral medications for advanced Parkinson's.
- We revised our campaign to focus on adding specialized staff to existing PD programs; funding PD specific training for allied health professionals; expanding the Deep Brain Stimulation program; and improving access to, and cost of, medications and caregiver support. To review the revised Five Point Plan, visit www.parkinson.bc.ca/fivepointplan.



RESEARCH

In 2017, Parkinson Society British Columbia provided \$86,917 to research, with additional funding promised over the duration of the research projects listed below.

In addition to our continued support of the Parkinson Canada Research Program, in 2017 PSBC partnered with the Michael Smith Foundation for Health Research (MSFHR), which matches our contributions to effectively double our impact.

Projects PSBC funded through the Parkinson Canada Research Program:

- **Dr. Anish Kanungo** - Determining the impact of a multidisciplinary movement disorder clinic on health outcomes and health care spending in Parkinson's disease
- **Dr. Michele Matarazzo** - Topographical analysis of the trajectory of dopaminergic degeneration in symptomatic and pre-manifest Parkinson's
- **Dr. Antonio Strafella** - Imaging synaptic pruning in Parkinsonisms (partially funded by PSBC)
- **Frederic Calon** - Clinicopathological investigations of the substantia nigra in Parkinson's disease (partially funded by PSBC)
- **Jordan Follett** - Retromer-dependent regulation of RNA trafficking in Parkinson's disease (partially funded by PSBC)

Projects PSBC co-funds through MSFHR, doubling our impact:

- **Roger Ashmus** - Development of Improved Substrates for Live Cell Imaging to Aid in Discovering New Glucocerebrosidase Therapeutic Agents
- **Christina Gros** - Development of a Flow Cytometry Assay for Accurate and Selective Measurement of Lysosomal GBA1 Activity in PBMC
- **Kota Mizumoto** - Genetic Dissection of Neuronal Pattern Formation

Extend Our Reach & Strengthen Our Impact

How are we investing in a full range of services for the Parkinson's community?



3 CONTINUING EDUCATION SCHOLARSHIPS

awarded to exercise instructors and healthcare professionals

17% GROWTH

in our social networks, Facebook and Twitter



280+ BROCHURES & HELP SHEETS

downloaded monthly from our website



Serving People Across the Province: 2017 Support Groups

- 100 Mile House
- Abbotsford
- Burnaby
- Campbell River
- Chilliwack
- Burnaby Chinese Speaking
- Courtenay/Comox
- Cowichan/Duncan
- Cranbrook
- Fort St. John
- Kamloops
- Kelowna
- Kelowna Caregivers
- Kootenay Lake East Shore
- Ladner
- Langley
- Langley Young Onset
- Lion's Bay
- Maple Ridge/Pitt Meadows
- Maple Ridge Caregivers
- Mission
- Nanaimo
- Nelson
- New Diagnosis 1 (Vancouver)
- New Diagnosis 2 (Vancouver)
- New Westminster
- North Shore
- North Shore Caregivers
- Online Caregivers
- Online YOPD
- Oliver/Osoyoos
- Parksville/Qualicum
- Parksville/Qualicum Caregivers
- Penticton
- Port Alberni
- Powell River
- Prince George
- Quadra Island
- Quesnel
- Richmond
- Richmond Caregivers
- Sparwood/Elk Valley
- South Sunshine Coast Shuswap/Salmon Arm
- South Sunshine Coast (Sechelt)
- Terrace
- Trail/Castlegar
- Tri-Cities
- Tri-Cities Caregivers
- Tsawwassen
- Vancouver Arbutus
- Vancouver Caregivers
- Vancouver West Side
- Vancouver Working Professionals
- Vernon
- White Rock



332 PEOPLE ATTENDED

our provincial conference, *Moving Forward, Together*. PSBC provided travel grants to **14 individuals** across the province

2,045 INDIVIDUALS

have connected one-on-one with our support services team for information and referrals



8 COMMUNITIES

participated in Step by Step, a walking program for people with Parkinson's



141 PEOPLE TRAINED IN TREATMENT TECHNIQUES

at Communication and Swallow Workshops



68 CAREPARTNERS

registered for online carepartner support group

50 CAREPARTNERS

attended the Time Out for Carepartners workshop



133 CLIENTS

used PSBC's free, short term counselling services between 2015 and 2017



376 AWARE IN CARE KITS



provided to members

OVER 500 PEOPLE ATTENDED

additional education events



Better, Together

How are we working to collaborate, improve and raise critical funding?

\$978,416 IN FUNDRAISING

revenue, up 11% over the previous year



\$898,836 RECEIVED FROM THE ESTATES OF SEVEN INDIVIDUALS



1,211 HOUSEHOLDS BECAME MEMBERS OF PSBC



THANK YOU TO ALL OUR GENEROUS DONORS

73.5% INCREASE

in gifts from foundations*



15% INCREASE

in monthly donors*



17.9% INCREASE

in major gifts*

*when compared with the previous year

\$433,332

RAISED BY 25 COMMUNITIES DURING PARKINSON SUPERWALK



- 1 Paul Gully and Lois Leslie of Shifting Gears for Parkinson's.
- 2 PSBC CEO, Jean Blake, and Parkinson SuperWalk volunteer organizer, Elizabeth Holroyd, together on walk day in White Rock. Photo courtesy of Kim Short at 3 Blondies Photography.
- 3 Shakin' the Rock participants.
- 4 Michael Cheung (right) of TeaParky with cousin at pub night fundraiser.
- 5 Hilary Simister and Richard Mayede. Photo courtesy of jjosue photography.

Special Thanks to Our Supporters

We are continuously inspired by donors who champion our cause with their generosity and we are proud to acknowledge the support of our volunteers, members and donors who enable us to serve the Parkinson's community in BC.

This report lists those who have honoured Parkinson Society British Columbia with a significant gift in 2017. Due to space constraints, we are unable to list all of our donors but their support is greatly appreciated.

INDIVIDUALS

Leadership Circle \$5,000 or more

- Anonymous
- Shelley Schreyer and Cory Walsh

INDIVIDUALS

Benefactors Circle \$1,000 - \$4,999

- Anonymous (17)
- Primrose Anderson
- Karin and William Arkinstall
- Peter and Marie Baigent
- Mark Betteridge
- Jean Blake
- Dr. Donald Cameron
- Kathreen Cammayo
- Chun Chen
- Michael and Joan Cooke
- John Davis
- Linda Dawson
- Lynn and Elzo deVries
- Victor Dyck
- Dr. Roger and Dr. Marjorie Eamer
- Donna Evans
- Frank Fallows and Family
- Kimberly Sambrook and David Fetterman
- Abe and Lillian Friesen
- Robert Greggs
- Alan and Marjorie Grinnell
- Alice Gully
- Richard Haschke and Jacqueline Ordroneau
- Don and Ruth Henderson
- Rod and Janice Hobbs
- James and Janice Hume
- Sandra Ingham and John Hepburn
- Ingrid and Juergen Kahl
- Victor L. Kerr
- Helen and Herb
- Maureen Legg
- Linda Leslie
- Roberta and Angus Leslie
- Marna Leslie

- Philip and Cecilia Li
- Colin and Kate MacBeath
- John and Mary Manuel
- Tony Marinelli
- Diane Marsh
- John McCurrach
- Bjorn and Rochelle Moller
- Michael and Carol Nedham
- Robin and Judith Nelson
- Bob Oliver
- David and Elaine Rickards
- Breda and John Sheehan
- Theresa Sheehan and Terry Ellis
- Dougal Shewan
- Carolyn and David Simmons
- Bernie and John Smerdon
- Peter Stojak
- Sam Sullivan
- John and Gilberte Thompson
- Garry and Cheryl Toop
- Christopher Vollan
- Erika and Daniel VonBank
- Carl A. Wagner
- Fern C. Watt
- (John) Barry and Andrea West
- Stan and Tilly Wiebe
- Paul and Marguerite Zakus
- Felicia Chen
- Donald Chunn
- Brian Cishecki
- Anita and Glen Connell
- John Corrie
- Kenneth and Nancy Coutts
- Patricia Craig
- Robert D. Cumming
- Chris and Niki Cumming
- Tony and Glenys Dawson
- Margaret de Grace
- Nancy Denofreo
- Gavin E. Dirom
- Raja Dutta
- Sharon and Alexander Dyball
- John Eaton
- Tess Elia
- Michael and Tracey Ellenwood
- Ralph and Linda Emsland
- Jed Falk
- Linda Ford
- Mike and Ae Ganske
- Betty N. Gayle
- Carolyn Gorman
- Tom Gradecak
- Faye E. Grant
- Gordon Green
- Gabe Guetta
- Jeremy Gutsche
- Brent and Terry Hancock
- Sarah Hanet
- Margaret Hanson
- Cheryl and David Hardie
- Maureen Hasbrouck
- Dr. Clifford Bruce Hill
- Bruce and Bernadette Hirtle
- Sean Hirtle
- Debra Hodnik and Jim Carta
- Kevin Hood and Jeanette Campbell
- Darlene and Paul Howard
- Ron and Linda Hoyer
- Lucille Huot
- Mark and Angela Hutchinson
- John Johnson and Eva Maria Moser
- Kirk Johnson
- Rita Jo-Ann Johnston
- Bill Koch and Margaret Kendrick

INDIVIDUALS

Tulip Circle \$500 - \$999

- Anonymous (33)
- Rob Aird
- Catherine Alkenbrack
- Glenn Allen
- William and Joy Armerding
- Laura-Lee Armstrong
- Shirley Barton
- Peter and Merial Barwin
- Barry and Georgina Beddome
- Wilfried Bernard
- Barbara Bilsland and Daniel Gumprich
- James and Evelyn Bowersock
- Colin and Susan Boyer
- Beverly and George Brazier
- Todd Brown
- Hans Buys
- Fab Carella

- Mona Kragh
- Gillian and Garth
- James Lebedovich
- Murray Leith
- Barbara Lockyer
- Eileen Mate
- George and Patricia Mauch
- Brian McConville
- Tenny and Neil McDaniel
- Vi and David McElhoes
- Drs. Martin and Janet McKeown
- Roger and Dominique Miller
- Barbara Milligan
- Jeffrey More
- Margaret E. Mutch and James Patterson
- Hugh Nash
- Cameron and Diana Neil
- Mavis and Walter Norman
- Marilyn and Darcy Olson
- Ted and Carolyn Osborn
- Jon Palfrey
- Ryan Pater
- Catherine Pedersen
- Maureen and David Peters
- Helen Petre
- Iris Pierrot
- Martin Pippard
- Mike Posnikoff
- Denise Rathnam
- Paul Rathnam
- Dr. Karla Reimer
- Dr. Alan and Brenda Reynolds
- Donald Rogers
- Robert Roy
- Don Royan
- Emily Schmidt and Greg Burns
- Brad and Tracy Schreyer
- James Shackleton
- Laird and Annalee Siemens
- Ed Silva
- Robert and Alex Skelly
- Bill Smeaton
- Richard and Joan Smyth
- Jim Stuehmer
- Janet Stuehmer and Richard Hutton
- Georgina Suppes
- The late Robert Swannell*
- Lyn Blanchard and Val Swannell
- Mary and Robert Thorn
- Case Van Diemen
- Catriona Vaughan
- David and Jennifer Wall
- Kiara Walsh
- Magdalene and Peter Watts
- Sue Wong
- Nachiko Yokota
- Tony and Nancy Yurkovich

LEGACY GIFTS

- Estate of Stamatia Darbyshire
- Estate of Cora Evelyn Galbraith
- Estate of Olive Gibson
- Estate of Marion Jolly
- Estate of Gwendelyne Ethel Moysa
- Estate of Norman Moysa
- Estate of Edward Herbert Peel

CORPORATIONS, COMMUNITY AND EMPLOYEE GROUPS, FOUNDATIONS AND SERVICE CLUBS Leadership Circle \$5,000 or more

- AbbVie Corporation
- Bell Media
- Black Press
- Blake, Cassels & Graydon LLP
- BMC Networks Inc. Technology Services
- Cache Ventures Inc.
- Frances A. McClean & Charles J. McNeely, Jr. IMP Fund, held at Vancouver Foundation
- Global BC
- Holland America Line
- Impark
- King Pacific Lodge
- Me-n-Ed's Enterprises Canada Ltd.
- NL Broadcasting Ltd.
- Lewis Family Fund, held at NWM Private Giving Foundation
- Provincial Employees Community Services Fund
- Scotiabank
- TELUS Communications Inc.
- The Alan and Doreen Thompson Charitable Foundation
- The Rix Family Foundation
- The Tenaquip Foundation
- UCB Canada Inc.

CORPORATIONS, COMMUNITY AND EMPLOYEE GROUPS, FOUNDATIONS AND SERVICE CLUBS

Benefactors Circle \$1,000 - \$4,999

- Anonymous (4)
- Allstar Group of Companies
- Beaver Valley Lions Club
- Bond Reproductions Inc.
- CHEK News
- CN Employees' and Pensioners' Community
- Forever Inked Tattoo Ltd.
- Fraternal Order of Eagles No.3453
- Fraternal Order of Eagles Vancouver Aerie No. 2075
- Gorman Bros. Lumber Ltd.
- Jim Pattison Broadcast Group LP
- Lamar Advertising Company
- LSVT Global, Inc.
- Mary Balanchuk & Stephanie Patterson Fund via PCI
- Nak'azdli Band Council
- Nash Johnston LLP
- North Vancouver Host Lions Club
- Oyama Zipline
- Phillips Brewing & Malting Co.
- RBC Foundation
- Rissling Services Ltd.
- Rona Home & Garden Kelowna #488
- Royal Bank Financial Group Foundation
- Royal Canadian Legion Branch No. 173
- Stolberg Engineering Ltd.
- TELUS (Team TELUS Cares)
- The Raven Foundation
- UniPHARM & Medicine Centre Pharmacies Charitable Foundation
- Valley Driving School Ltd.
- Werner and Helga Hoing Foundation
- WestJet
- Whites Location Equipment Supply Inc.

**Represents generous individuals who gave during their lifetime and are now deceased.*

Note: We strive to ensure that each name is appropriately listed and spelled. Please let us know if we have made an error so we may correctly recognize you in the future.



Save the Date!

Parkinson SuperWalk will return to British Columbia
the weekend of September 8 & 9, 2018.

For more information and to register, visit:
www.parkinson.bc.ca/superwalk



Suite 600 – 890 West Pender Street, Vancouver, BC V6C 1J9
Telephone: 604-662-3240 | Toll Free: 1-800-668-3330 | Fax: 604-687-1327

www.parkinson.bc.ca



@ParkinsonsBC

CHARITABLE REGISTRATION NUMBER 11880 1240 RR0001