



IT TAKES A COMMUNITY

Our Mission

Parkinson Society British Columbia exists to address the personal and social consequences of Parkinson's disease through advocacy, education, community outreach, scientific research and public awareness.

What is Parkinson's Disease?

Parkinson's disease is caused by a loss of dopamine in the brain and is the second most common chronic neurodegenerative disorder after Alzheimer's disease. Symptoms include tremor, rigidity, slowness of movement, difficulty with speech, sleep disturbance and mood disorders. There is currently no cure.

It is estimated that there are 11,000 individuals living with Parkinson's in British Columbia; 100,000 in Canada; 1 million in the US and 6.3 million worldwide. Experts predict that the incidence of Parkinson's will increase significantly as the population ages. And while the vast majority of people with Parkinson's are over 60, 20% are diagnosed before the age of 50, many of which are in their 30's and 40's.

Serving People across the Province

2012 Support Groups

- Abbotsford
- Burnaby
- Campbell River
- Chilliwack
- Chinese Speaking (Vancouver)
- Courtenay/Comox Valley PWP
- Courtenay/Comox Valley Caregivers
- Cowichan
- Cranbrook
- Creston
- Denman Island
- Fort St. John
- Kamloops
- Kelowna
- Kelowna Caregivers
- Ladner
- Langley
- Langley Caregivers
- Maple Ridge/Pitt Meadows PWP
- Maple Ridge/Pitt Meadows Caregivers
- Mission
- Nanaimo PWP
- Nanaimo Caregivers
- Nelson
- New Diagnosis 1 (Vancouver)
- New Diagnosis 2 (Vancouver)
- New Westminster
- North Shore
- Osoyoos
- Parksville/Qualicum PWP
- Parksville/Qualicum Caregivers
- Penticton
- Powell River
- Prince George
- Richmond
- Shuswap/Salmon Arm PWP
- Shuswap/Salmon Arm Caregivers
- South Sunshine Coast (Sechelt)
- Sparwood
- Squamish
- Surrey
- Terrace
- Trail/Castlegar
- Tri-Cities PWP
- Tri-Cities Caregivers
- Tri-Cities Men's Group
- Tsawwassen
- Vancouver Arbutus
- Vancouver Broadway
- Vancouver Caregivers
- Vancouver West Side
- Vernon
- West Vancouver Caregivers
- White Rock

Message from Bill More, Chair

As I complete four years on the Board of Directors and two years as Board Chair, it is with great pride that I look back on the achievements of Parkinson Society British Columbia (PSBC) and the many milestones we have reached together.

Since 2006, PSBC has grown to be a valued and trusted resource for thousands of individuals in BC living with Parkinson's. In 2012, we responded to more than 1,700 information calls; organized eight educational events province-wide including the first ever Young Onset Parkinson's seminar; and, increased our network of support groups to 53 across BC.

Making sure that no one has to face Parkinson's alone is the central focus

of our mission and we could not achieve this ambitious goal without the determination, dedication and commitment of our Board members, donors, volunteers and staff.

Heartfelt thanks go to everyone who made my tenure on the Board so rewarding. My time with PSBC has been a gratifying experience, characterized by the extraordinary individuals who have given their time and energy to help, provide leadership, and propel the Society to the next level. It has been a privilege and an honour to be a part of it all.



Bill More, Chair

Message from Diane Robinson, CEO

It takes a community! Parkinson Society British Columbia is not just an organization of eight staff members. It is a community of many – people living with Parkinson's, carepartners, family, friends, supporters and healthcare professionals. Busy schedules and a fast-paced world make it challenging for all of us to remain connected. However, we continue to expand, improve and build stronger bonds within our network.

We believe that there is no limit to what we can achieve with a passionate and dedicated group of people, and this year was no exception. As a

community, unified in our commitment to improve the lives of those affected by Parkinson's, we made great strides in support services, research funding and education, and we surpassed most of our revenue goals.

Looking forward and beyond, we are confident that we will continue to grow and meet our goals of shaping a brighter future for those affected by Parkinson's disease in British Columbia.



Diane Robinson, CEO

Message from Colin MacBeath, Treasurer

Parkinson Society British Columbia's financial statements for the year ended December 31, 2012 have been audited by our external auditors who provided their qualified opinion that, based on the audit evidence they accumulated, the financial statements fairly present the Society's financial position and results from operations in accordance with the applicable Canadian accounting standards for not-for-profit organizations.

The Statement of Financial Position presents healthy working capital with current assets significantly exceeding current liabilities. The Society's investment portfolio, which is presented as \$1,338,000 but has a market value of \$1,365,000, continues to generate modest returns. Although the Society is generally not capital intensive, it invested \$7,000 in certain information technology capital assets to maximize efficiency and effectiveness.

The Statement of Changes in Net Assets presents accumulated unrestricted net assets of \$1,785,000.



Colin MacBeath, Treasurer

Unrestricted net assets of this magnitude suggest the Society could operate in the same capacity it did in 2012 for approximately 1 year and 4 months if it stopped generating revenues today. More importantly, it allows the Society both stability and opportunity.

The Statement of Revenue and Expenses presents the results of the Society's activities for 2012. Further to the highlights described throughout the Annual Report, the Society paid an assessment fee of \$169,000 to Parkinson Society Canada in accordance with the Parkinson Society Federation Agreement. Forty percent of the assessment fee was designated to the research pool awarded by the National Scientific Research Program, while fifty percent was designated to advocating for health care best practices, maintaining pertinent education programs, and enhancing existing support programs.

Overall, the Statement of Revenue and Expenses presents a surplus of \$50,000.

As previously mentioned, the Society enters 2013 with reserves equal to 16 months of its historical expenses which provides the Board with incredible opportunity. To deploy its resources, the Board is planning to invest in some very unique projects for 2013. One in particular is going to be "reely" exciting.

Our Picture of Financial Accountability

Revenue 2012

● Investment & Other Income 3%

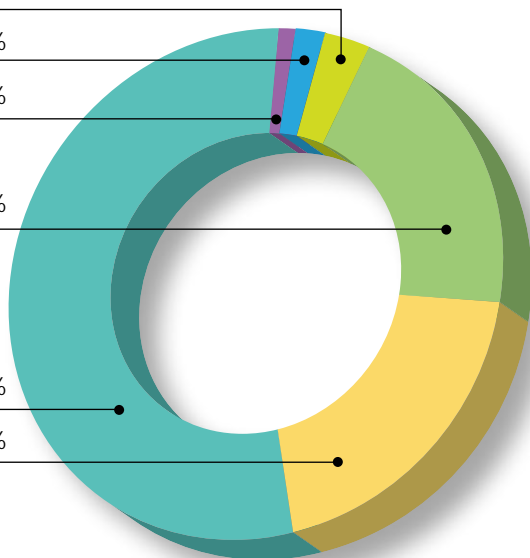
● Support Services 2%

● Corporate Donations 1%

● Bequests 20%

● Special Events 54%

● Donations & Membership 20%



Operating Expenses 2012

● Support Services 24%

● Administration & Governance 22%

● Public Awareness 13%

● Research 13%

● Fundraising 28%



To view a copy of our audited 2012 Financial Statements, please visit our website at www.parkinson.bc.ca

Education, Support services

2012 Highlights

In 2012, Parkinson Society British Columbia expanded its services to people living with Parkinson's as part of our mission to address the growing need for support and education.

- We responded to an increased number of information and referral requests, from 1,303 in 2011 to over 1,700 in 2012, marking an increase of 29% since last year and a staggering 82% increase since 2008.
- We continued to expand our support group network across the province, reaching an all time high of 53 groups, marking a 10% increase from 2011 and a 33% increase compared to 2008 when we managed 40 groups.
- We developed and implemented the PDLink Program, a peer support program providing personalized, one-on-one support to people with Parkinson's and caregivers via phone or email. We currently have 17 people matched with PDLink volunteers, for a total of 34 people involved in this new program.
- We hosted eight educational seminars and workshops throughout the province, representing a record number of events. In the past five years, PSBC has organized a total of 27 educational events for people with Parkinson's and caregivers, including a 3-day conference.



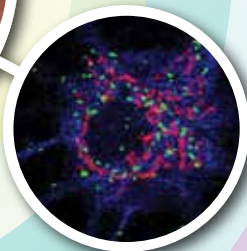
Research

Parkinson Society Canada's National Research Program funds high-quality innovative research by established and promising Canadian investigators. Together with our Regional Partners across Canada, PSBC contributes annually to the Research Program in order to support our joint mission.

This year, PSBC made a contribution of \$210,000 for research which included funding two researchers at UBC: Dr. Marjorie Gonzalez of the Department of Physics & Astronomy, who was awarded the Basic Research Fellowship for "*Study of treatment-related psychiatric complications in PD*

using multimodality brain imaging," and Dr. Doris Doudet, Department of Medicine/Neurology, who was awarded the Pilot Grant Project for "*Validating a tracer of the noradrenaline system in primate.*"

The Research Program in Canada spans a variety of health disciplines such as nursing, occupational therapy, speech language pathology and social work. It also aims at building capacity among the next generation of Canadian researchers and contributing on an international scale to the collective understanding of this complex disease and to the global search for a cure.



Fundraising

Parkinson Society British Columbia does not receive any government funding and therefore relies entirely on the generosity of its members, donors, corporations and foundations as well as special fundraising events. 2012 was an exceptional year in terms of the support the Society received from the Parkinson's community in BC.

Parkinson SuperWalk 2012

A record breaking \$579,000 was raised in 17 communities across the province. PSBC ranked second nationally and had the highest fundraising team in the history of SuperWalk. The *Hike for Hank* team, spearheaded by Laura and Henry Block who matched the funds raised by the team, raised a record \$176,985. The number of teams increased from 80 in 2011 to 114 in 2012. We also increased the number of SuperStar Walkers (walkers raising \$1,000 or more) from 68 in 2011 to 98 in 2012. We sincerely thank all who participated in this signature event.

An Affair to Remember: La Dolce Vita

Held under the auspices of the Italian Consulate General, 250 guests attended the Gala. The evening was a critical success, raising \$141,000. We are most grateful for the generous support of our sponsors – Jarvis McGee Rice Trial Lawyers, Pacific Blue Cross, TEVA Canada Innovation, Canadian Western Bank, Norvartis, Precision Injection Molding Inc., The Fairmont Hotel Vancouver, The Georgia Straight and Bond Repro.

We are proud of the important gains we made in 2012 which would not have been possible without the commitment of our Board members, volunteers and staff whose unwavering dedication and tireless efforts made this successful year possible.





1



2



3



7



6



5



4

8

Photos counter clockwise 1, 2, 3:
An Affair to Remember: La Dolce Vita

Photos 4, 5, 6: Parkinson SuperWalk

Photo 7: Me'n Ed's Golf Tournament

Special Thanks to Our Supporters

Thank you! As a donor, you have provided help and hope for the thousands of individuals living with Parkinson's disease in BC. We sincerely thank each person giving \$250 and more as well as the companies, community groups, foundations, service clubs and sponsors supporting the Society.

INDIVIDUALS

Leadership Circle

\$5,000 or more

Laura and Hank Block
John and Rose Block
Jean C. Ferguson
Eric Morrison
Alan G. Thompson

Benefactors Circle

\$1,000 to \$4,999

Anonymous
Grant Burnyeat
Steve Cochrane
Donna Evans
Evelyn Galbraith
Cathy and Gary Harasym
Richard Haschke and
 Jacqueline Ordronneau
Carle and Shirley Jaklin
Bob and Renae Kuhn
Linda Leslie
Marna Leslie
Diane Palmason and
 Ernest Black
John C. Taylor*
Dick Williams

Tulip Circle \$500 to \$999

Rob Aird
Shelagh Ballard
Todd Brown
Masako Carlyle
Shirley Clarke and Graham
 Crockart & Norm and
 Kerrie Couttie
Ken and Nancy Coutts
Mona Currie

The Mel Dickey Family
Hermann and Regine Fefer
Violet and Robert Hamilton
Terry and Brent Hancock
Bob and Sue Hastings
Barbara and Shell Hershberg
Paul and Darlene Howard
Doreen and Anthony Kereliuk
Bruce and Dorothy McCallum
Joan and John McConville
Brett B. Morgan
Judith and Robin Nelson
The Honourable John L. Nichol
Viole and Edward Parker
Irene Peacock
Iris Pierrot
Ebie and Ian Pitfield
Sukhvinder Rai
Patrick Robinson
Roberta and Helmut Schmidt
Breda and John Sheehan
Theresa Sheehan and
 Terry Ellis
Robert and Alex Skelly
Sylvia and Winston Stothert
Elisabeth Thompson
John and Gilberte Thompson
Len van Leeuwen

Hope Circle \$250 to \$499

Anonymous
Robert and Linda Allen
Bryan Aubie
Wendy G. Baker
Dr. Philip Barer
Robert and Doreen Bland
Alix and Tam Boyar
George and Beverly Brazier
The Bryks Family

David Carmean
Larry Chisholm
Rick Clendenning
Bob and Vi Crone
Allan Downs
Marie Downs
Warren and Sandra Downs
Lin and Ken England
Frank Fallows and Family
Dr. Terry and
 Dr. Wendy Fidgeon
Stan and Gael Fisher
Barbara Fisk
Robert and Muriel Foers
Lori and Nelson Francisco
Rosemarie Freeman
Nell Friesen
Mike and Ae Ganske
Lynda Griffiths
Conrad and Anthea Guelke
Valerie and Arthur Harrison
Aileen and Franz Hasenbacher
Reta Herunter
Russell and Penny Jennings
Rovin Karuna
Maureen and John Knight
Angela Laprairie
Colin MacBeath and Kate
 MacQuarrie
Sandra MacPherson
Taylor Macrae and Angie
 Thibault
John and Jennifer Marriott
April McCormack
Neil McDowall
Dan and June McGuire
Jack and Angela McKeown
Angus McLaren
Alan and Holly Meadows

Dominique and Roger Miller
Edward and Penny Moul
Mavis and Walter Norman
Rendy and Brian Olthuis
Anne and Dirk Pastoor
Christina Reed
Pat and Joseph Reilander
Miriam and Allan Ruttan
Peter and Mary Saunders
Hilda and Harold* Smith
Mary Strachan
Mary and John Sturgess
Ida Sullivan
Ken Suppes
Doina Taler-Silvan
Wilfred and Kay Thebes
Debbie Thomas and John
Pement
Jack and Mavis Toovey
Barbara and Andrew Vogan
Terry and Catherine Warren
Peter and Magdalene Watts
Barry West
May Wong
Richie Yeung
Carol and Mark Zacher
Paul and Marguerite Zakus

**CORPORATIONS,
COMMUNITY AND
EMPLOYEE GROUPS,
FOUNDATIONS AND
SERVICE CLUBS**

**Leadership Circle
\$5,000 or more**

NWM Private Giving
Foundation – Lewis
Family Fund
TELUS – Team TELUS Cares
and Dollars for Doers
Vancouver Foundation –
The McGrane-Pearson
Endowment Fund

**Benefactors Circle
\$1,000 to \$4,999**

Custom Plates and Profiles,
a division of Samuel, Son
& Co. Limited
Werner & Helga Hoing
Foundation
Hutchison Enterprises Ltd.
The Hydrecs Fund
The Law Foundation of
British Columbia
Magee-Seward Family
Foundation
The Andrew Mahon
Foundation
Norco Products Ltd.
Novartis Pharmaceuticals
Canada, Inc.
Plewman Auctioneering
Prince of Wales Lodge
No. 100
Provincial Employees
Community Services Fund
RBC Investments / RBC
Dominion Securities
Scotia Bank BC & Yukon
Region
Valley Driving School Ltd.
Valley West Auto
White Rock Lioness Club

Tulip Circle \$500 to \$999

Anonymous
Abbotsford Support Group
Armstrong Lions Club
Burnaby Lougheed
Lions Club
Can-Ital Ladies Society
Gordon Russell Limited
Sierra Wireless
Wawanesa

Hope Circle \$250 to \$499

Executive Suite
Men's Mid-Week Golf Club
Real Estate Council of
British Columbia
The Real Estate Institute of
British Columbia
Royal Canadian Legion
Branch No. 139
Strategic Charitable Giving
Foundation – Lois
McElheran Foundation
University Golf Club
Vancouver Foundation –
Naphtali Family Memorial
Fund

EVENT SPONSORS

Bond Repro
Canadian Western Bank
Jarvis McGee Rice LLP
Pacific Blue Cross
Precision Injection
Molding Inc.
TEVA Canada Innovation
UMC Charity and Medicine
Centre Pharmacies

ESTATES

The Estate of Rudolf Friedl*
The Estate of Wai Haan Hui*
The Estate of Irene Mildred
Stevens*
The Estate of Irene Walchuck*
The Estate of Vera Wamosher*

**This represents generous
individuals who gave during
their lifetime and are now
deceased.*

*Note: We strive to ensure that
each name is appropriately
listed and spelled. Please
let us know if we have made
an error so we may correctly
recognize you in future.*

Board of Directors and Staff 2012

Chair

Bill More

Vice-Chairs

Andrew Davenport
Alexandra Rice

Secretary

Patricia Reid

Treasurer

Colin MacBeath

Directors

Pat Gallaher
Tim O'Connor
Tony Pugh
Heather Sanii
Jennifer Spencer
Val Swannell
Bob Thompson
Sherri Zelazny

Medical Advisor

A. Jon Stoessl, MD

Financial Advisor

Chris Funston

Staff

Chief Executive Officer

Diane Robinson

Director, Resource Development

Cecilia Tupper

Director, Education and

Support Programs Jennifer Foster

Information and Program Manager

Robbin Jeffereys

Resource Development Manager

Betty Hum

Information and Referrals Coordinator

Stacey Clarke

Marketing and Communications

Coordinator Laura Darch

Donor and Member Services

Coordinator Erika Magnuson-Ford

You Are Not Alone.



Parkinson Society British Columbia
Société Parkinson Colombie-Britannique

Suite 600 - 890 West Pender Street, Vancouver, BC V6C 1J9

Telephone: 604 662 3240 | Toll Free: 1 800 668 3330 | Fax: 604 687 1327

www.parkinson.bc.ca

CHARITABLE REGISTRATION NUMBER 11880 1240 RR0001